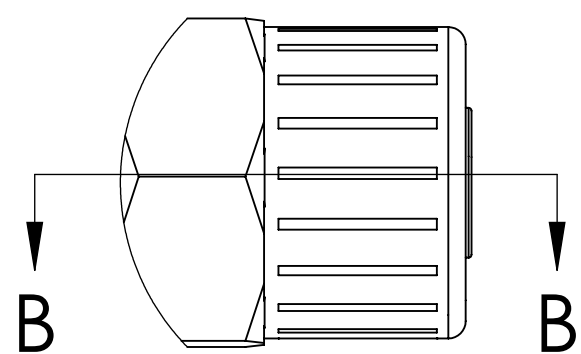
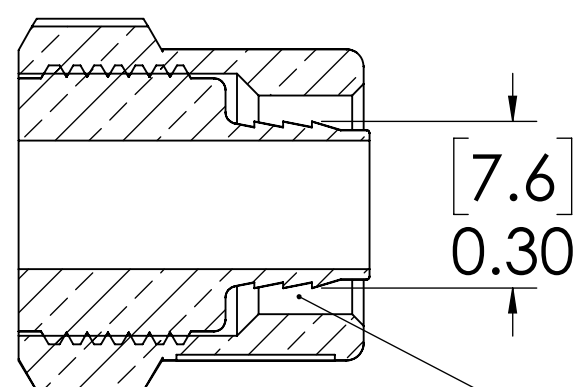


REVISIONS						
SHEET	ZONE	REV.	ECO	DESCRIPTION	DATE	APPROVED
1	ALL	A	50242	PIN, PIN SPRING & 2017 FORMAT UPDATE	10/18/2018	HRC

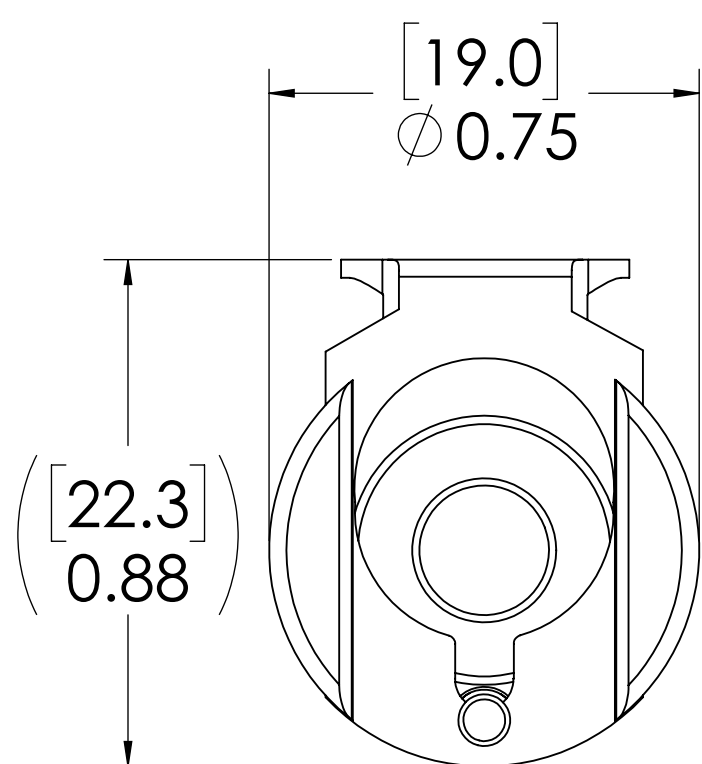


DETAIL A

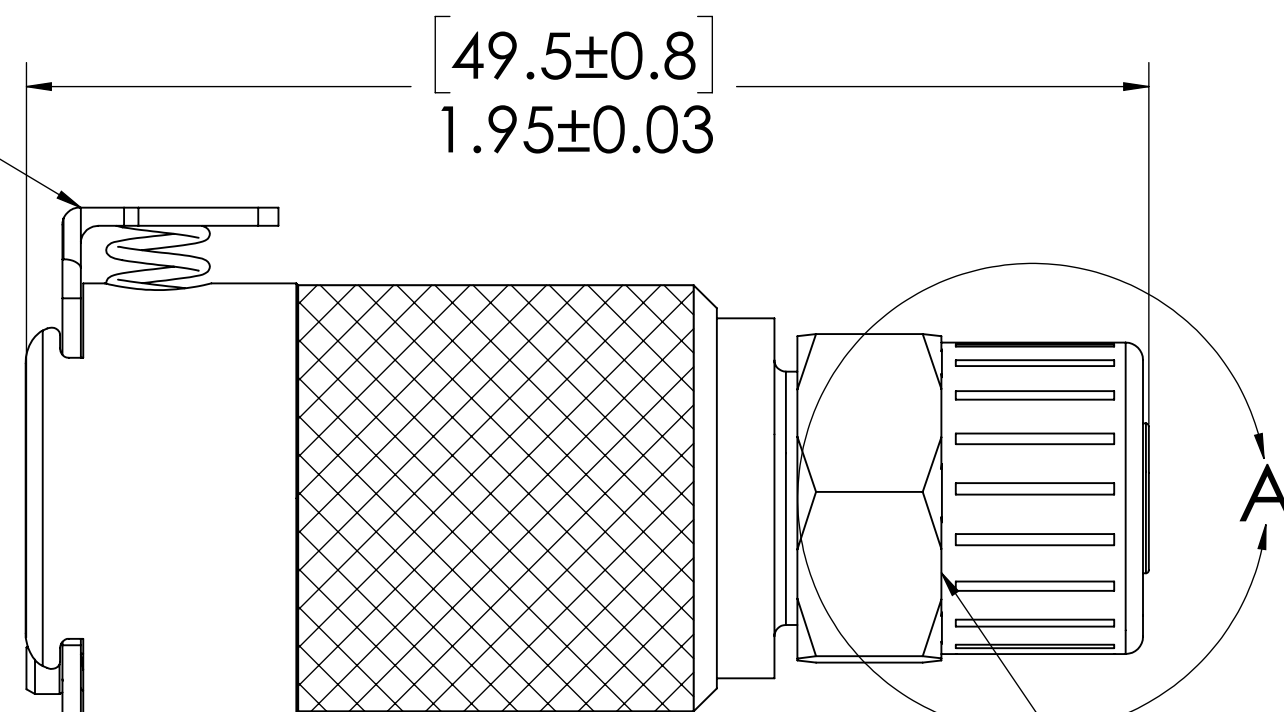


SECTION B-B

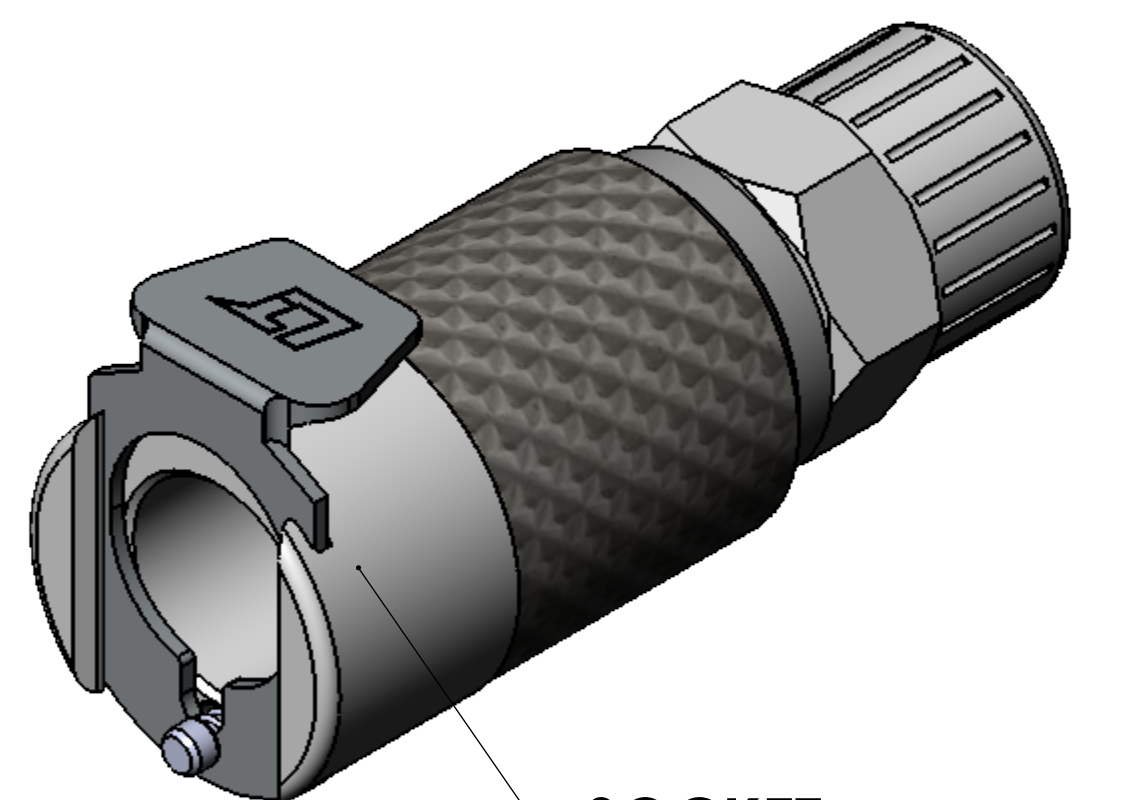
3/8" TUBE OD



**LATCH
(STAINLESS STEEL)**



**PTF NUT
(BRASS, NICKLE PLATED)
(PACKAGED SEPARATELY)**




**SOCKET
(BRASS, NICKEL &
CHROME PLATED)**

NOTES:

1. MATERIAL: BRASS
2. FINISH: CHROME

FOR REFERENCE ONLY

<small>UNLESS OTHERWISE SPECIFIED: DIMENSIONS ARE IN INCHES TOLERANCES: FRACTIONAL ±1/32 ANGULAR: MACH ±0.5 BEND ±2 ONE PLACE DECIMAL ±0.1 TWO PLACE DECIMAL ±0.01 THREE PLACE DECIMAL ±0.005 TWO PLACE DUAL (mm) [±0.12]</small>	DRAWN	LDM	1/17/2018	 PART NO: 40CB-S9-06 DESCRIPTION: LinkTech 40CB Series Straight Female, Non-valved, 3/8" PTF, Chrome Brass						
	CHECKED	HRC	1/17/2018							
	ENG APPR.	HRC	10/18/18							
	MFG APPR.	BDB	10/18/18							
PRODUCTION	LS	10/18/18								
<small>PROPRIETARY AND CONFIDENTIAL THE INFORMATION CONTAINED IN THIS DRAWING IS THE SOLE PROPERTY OF LINKTECH LLC. ANY REPRODUCTION OR DISCLOSURE IN PART OR AS A WHOLE WITHOUT THE WRITTEN PERMISSION OF LINKTECH LLC IS STRICTLY PROHIBITED.</small>	COMMENTS:			<table border="1"> <tr> <td>SIZE</td> <td>DWG. NO.</td> <td>REV</td> </tr> <tr> <td>C</td> <td>40CB400054</td> <td>A</td> </tr> </table>	SIZE	DWG. NO.	REV	C	40CB400054	A
SIZE	DWG. NO.	REV								
C	40CB400054	A								
SCALE: NTS		WEIGHT:	SHEET 1 OF 1							